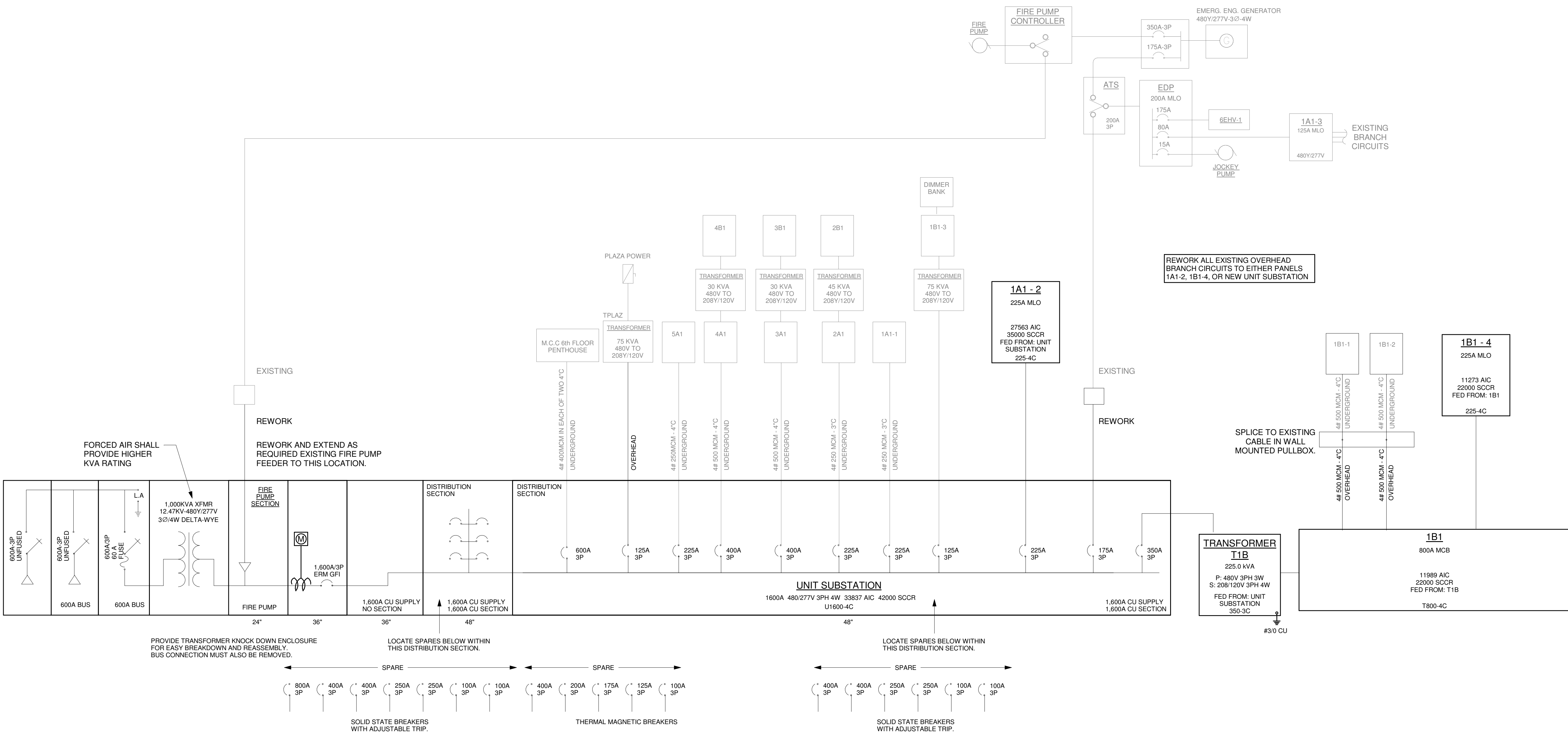
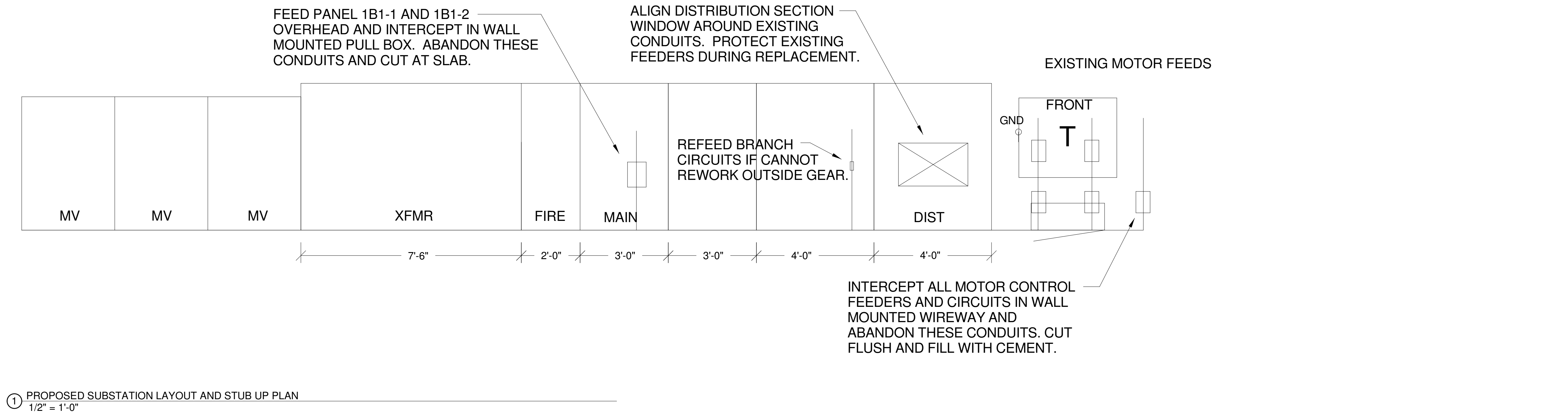


ELECTRIC SINGLE LINE EQUIPMENT SCHEDULE																										
NOTES: ALL CONDUIT SIZES INDICATED ARE MINIMUM SIZES. INCREASE SIZES AS REQUIRED TO ACCOMMODATE CONDUCTOR PULLING EASE, FIELD CONDITIONS, ETC. "CU" = COPPER CONDUCTOR, "AL" = ALUMINUM CONDUCTOR				TYPICAL EQUIPMENT NAME NOMENCLATURE: 1 - POWER DISTRIBUTION SYSTEM (BLANK - NORMAL, E - EMERGENCY, S - STANDBY, L - LIFE SAFETY) 2 - DESCRIPTION (H - 480Y/277V, L - 208Y/120V) 3 - FLOOR / LEVEL 4 - SEQUENCE				FEEDER ID NOMENCLATURE: - INDICATES FEEDER SIZED TO COMPENSATE FOR VOLTAGE DROP 1 - GROUND TYPE (MAY BE BLANK) U = EQUIPMENT GROUND CONDUCTOR REMOVED FOR SERVICE ENTRANCE FROM UTILITY P = PARTY-SIZED EQUIPMENT GROUND CONDUCTOR X = EXISTING FEEDER TO REMAIN UNLESS OTHERWISE NOTED T = UPSIZED GROUND CONDUCTORS FOR TRANSFORMER SECONDARY								2 - CONDUCTOR AMPACITY 3 - TOTAL NUMBER OF PHASE AND GROUND ("NEUTRAL") CONDUCTORS 4 - CONDUCTOR MATERIAL: C = COPPER, A = ALUMINUM 5 - SPECIAL (MAY BE BLANK) I = ISOLATED GROUND (PROVIDE CONTINUOUS INSULATED EQUIPMENT GROUNDING CONDUCTOR(S) FROM INSULATED ISOLATED GROUND BAR(S) TO RESPECTIVE UPSTREAM SERVICE ENTRANCE OR DERIVED SYSTEM GROUNDING ELECTRODE CONDUCTOR AS APPLICABLE.)										
EQUIPMENT	PHASE	POWER BRANCH	EQUIPMENT TYPE	SUPPLY FROM	SPACE NUMBER	SPACE NAME	VOLTAGE	PHASE	WIRES	DEMAND (kVA)	DEMAND (A)	MAINS RATING (A)	MAINS FRAME RATING (A)	MAINS TYPE	FEEDER ID	FEEDER	VD %	SPD	ULSC	GEC	ENCLOSURE TYPE	200% NEUTRAL	K-RATING	FAULT CURRENT (A)	SHORT CIRCUIT RATING (A)	NOTES
SUB TX	New Construction	NORMAL	1000 KVA Transformer	SUB TX			480	3						MAIN LUGS ONLY	U1600-4C	(5) SETS OF (4) #400 KCMIL CU IN 3" CONDUIT EACH	0.016				NEMA 1			34366		
-- UNIT SUBSTATION	New Construction	NORMAL	Switchboard	SUB TX			480	3	4	241.6 KVA	291 A	1600	1600		U1600-4C	(5) SETS OF (4) #400 KCMIL CU IN 3" CONDUIT EACH	0.016				NEMA 1			33837	42000	
1A1-2	New Construction	NORMAL	Branch Panelboard	UNIT SUBSTATION			480	3	4	0.0 KVA	0 A	225	225	MAIN LUGS ONLY	225-4C	(4) #4/0 AWG CU, (1) #4 AWG CU GND. IN 3" CONDUIT	0.016				NEMA 1			27563	35000	
-- 1A2-1	New Construction	NORMAL	Branch Panelboard	UNIT SUBSTATION			480	3	4	65.5 KVA	79 A	400	400		400-4C	(2) SETS OF (4) #3/0 AWG CU, (1) #3 AWG CU GND. IN 3" CONDUIT EACH	0.073				NEMA 1			27552	35000	
-- 1A2-2	New Construction	NORMAL	Branch Panelboard	UNIT SUBSTATION			480	3	4	192.1 KVA	123 A	400	400		400-4C	(2) SETS OF (4) #3/0 AWG CU, (1) #3 AWG CU GND. IN 3" CONDUIT EACH	0.113				NEMA 1			27769	35000	
-- T1B	New Construction	NORMAL	225 KVA Transformer	UNIT SUBSTATION			480	3	3	0.0 KVA	0 A	350	350		350-3C	(3) #500 KCMIL CU, (1) #3 AWG CU GND. IN 3" CONDUIT	0.016				NEMA 1			12151	18000	
1B1	New Construction	NORMAL	Distribution Panelboard	T1B			208	3	4	0.0 KVA	0 A	800	800	THERMAL MAGNETIC	T800-4C	(3) SETS OF (4) #300 KCMIL CU, (1) #2 AWG CU GND. IN 3" CONDUIT EACH	0.016				NEMA 1			11989	22000	
-- 1B1-4	New Construction	NORMAL	Branch Panelboard	1B1			208	3	4	0.0 KVA	0 A	225	225	MAIN LUGS ONLY	225-4C	(4) #4/0 AWG CU, (1) #4 AWG CU GND. IN 3" CONDUIT	0.016				NEMA 1			11273	22000	



SINGLE LINE DIAGRAM
SCALE: NONE